

Based on NCF
for Foundational
Stage 2022 and
NIPUN BHARAT
2021

Skillment



Environmental Studies

A Multi-skill Activity Book on Environmental Studies



FS-5
Class - 2



ANSWER KEY

CONTENTS PAGE

ANSWER KEY (FS-5)

1.	I am Growing	1
2.	My Body	3
3.	My Family	5
4.	Our Food	7
5.	Our Clothes	9
6.	Our House	11
7.	Our School	13
8.	Our Neighbourhood	15
9.	People in Our Neighbourhood	18
10.	Plants around Us	20
11.	Animals around Us	23
12.	Our Earth	25
13.	Air and Water	28
14.	Weather and Seasons	31
15.	Transport and Communication	34
16.	Directions and Time	36
17.	Our Festivals	39
18.	Safety Rules	41

1

I am Growing



Self-Assessment

A. Tick (✓) the correct option.

1. What changes as we grow older?
a. Our looks b. Our habits c. Both of these
2. Which of the following is routine work?
a. Brushing teeth b. Painting c. Gardening
3. Which of the following is a hobby?
a. Dancing b. Eating dinner c. Taking a bath

B. Write T for true and F for false statements.

1. We learn to do new things as we grow older. T
2. We look different from one another. T
3. We all have the same likes and dislikes. F
4. Each one of us is special. T
5. A boy grows into a man. T

C. Answer the following questions.

1. *Do it yourself*
2. *Do it yourself*
3. *Do it yourself*
4. *Do it yourself*
5. What do you mean by routine work?
The work we do daily on a particular time is called a routine work.
6. What do you mean by a hobby?
The activity we do when we have free time is called a hobby.



D. *Do it yourself*

E. **Now, write answers to the following questions.**

- Do you think the man and his son are poor?

Yes

- What suggests you about that?

Their shabby clothes and no footwear

- Do they have as many choices of clothes and food as you have?

No

- What can other people do to improve their condition?

People can give them a job so that such poor people can earn.

F. *Do it yourself*

PMP



2

My Body



Self-Assessment

A. Tick (✓) the correct option.

- Which of the following is an external organ?
a. Heart b. Brain c. Hand
- Which parts of our body are also known as limbs?
a. Hands b. Legs c. Both of these
- Which of the following is an internal organ?
a. Ear b. Chin c. Neither of these
- Which organ helps us take decisions?
a. Heart b. Brain c. Stomach
- Which organs help us breathe?
a. Eyes b. Lungs c. Ears

B. Fill in the blanks with words given in the box.

head external stomach internal

- The nose is an external organ.
- The heart is an internal organ.
- The brain is located inside our head.
- The food we eat goes into the stomach.

C Write T for true and F for false statements.

- Our lungs are internal organs.
- Our eyes help us hear sounds.
- Tongue helps us taste the things we eat.
- Brain helps us think, learn and remember.
- Skin helps us touch and feel the things.

T
F
T
T
T

EVS FS-5



D. Answer the following questions.

1. What are organs? Name any two.

Parts which make up our body are called organs, such as eyes and heart.

2. What do you mean by external body parts? Name any one.

Body parts that we can see are external body parts such as hand.

3. How do our sense organs help us?

Sense organs help us know about the things around us.

4. What are internal body parts? Name any one.

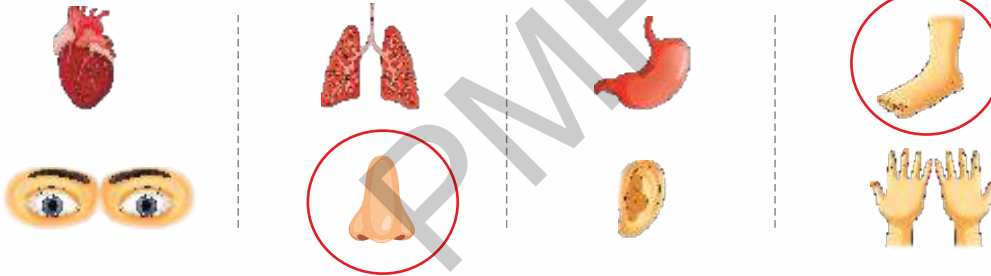
Body parts that we cannot see are internal body parts such as brain.

5. How do muscles and bones help us?

Muscles and bones together help us in moving, playing and running.

E. In each row of organs, circle the odd one out.

CTS



F. Do it yourself

G. Tick (✓) the picture in which the boy's eyes are at a distance from the screen.



3

My Family



Self-Assessment

A. Tick (✓) the correct option.

1. A nuclear family is a _____ family.

a. small	<input checked="" type="checkbox"/>	b. large	<input type="checkbox"/>	c. very large	<input type="checkbox"/>
----------	-------------------------------------	----------	--------------------------	---------------	--------------------------
2. In a _____ family, children live either with mother or father.

a. single-parent	<input checked="" type="checkbox"/>	b. two-parent	<input type="checkbox"/>	c. joint	<input type="checkbox"/>
------------------	-------------------------------------	---------------	--------------------------	----------	--------------------------
3. A joint family is a _____ family.

a. small	<input type="checkbox"/>	b. large	<input checked="" type="checkbox"/>	c. single-parent	<input type="checkbox"/>
----------	--------------------------	----------	-------------------------------------	------------------	--------------------------
4. What are the children of uncles and aunts called?

a. Nephews	<input type="checkbox"/>	b. Siblings	<input type="checkbox"/>	c. Cousins	<input checked="" type="checkbox"/>
------------	--------------------------	-------------	--------------------------	------------	-------------------------------------

B. Fill in the blanks with words given in the box.

sister grandparents uncle parents brother

1. Father and mother are called parents.
2. Father's and mother's parents are called grandparents.
3. Father's or mother's brother is called uncle.
4. Father's or mother's sister is called aunt.
5. An uncle is also called chacha or mama.

C. Write T for true and F for false statements.

1. Grandparents, parents and their children make a large family. T
2. The surname is the first name of a person. F
3. There are different types of work in a family. T
4. Many families keep a pet with them. T



D. Answer the following questions.

1. What do you mean by a nuclear family?

In a nuclear family, parents and their children live together.

2. Who all make a joint family?

Grandparents, parents, uncles, aunts and their children make a joint family.

3. *Do it yourself*

4. *Do it yourself*

5. *Do it yourself*

E. The letters in the names of some relations have got jumbled up. Unscramble the letters and write the names correctly.

LS

- MOERTH : MOTHER
- HERFAT : FATHER
- UNECL : UNCLE
- CONUSI : COUSIN
- GRANDENTPAR : GRANDPARENT



F. *Do it yourself*

G. *Do it yourself*



4

Our Food



Self-Assessment

A. Tick (✓) the correct option.

1. What gives us energy to work and play?

a. Games b. Rest c. Food

2. Which of the following foods comes from plants?

a. Milk b. Egg c. Rice

3. Which food item comes from animals?

a. Cheese b. Cereals c. Spices

4. Fish and milk are _____ foods.

a. protective b. body-building c. energy-giving

5. Which of the following is a junk food?

a. Noodles b. Egg c. Milk

B. Fill in the blanks with words given in the box.

diseases raw healthy cook water

1. Drinking enough water is very important.

2. We cook cereals and pulses before eating them.

3. Apples and oranges are eaten raw.

4. Fruits and vegetables protect us from diseases.

5. Chips and burger are tasty but they are not healthy.



C. Write T for true and F for false statements.

1. Spices come from plants.
2. Tomato can be eaten raw or cooked.
3. Washing hands before and after eating is important.
4. It is not good to talk while having food in mouth.
5. Vegetables are protective foods.

T
T
T
T
T

D. Answer the following questions.

1. Why do we eat food?

Food gives us energy to work and play. It helps us grow healthy and strong.

2. Name any three types of foods that come from plants.

Fruits, vegetables and pulses.

3. What types of food do we get from animals?

Meat, milk, eggs and honey

4. Name any three body-building foods.

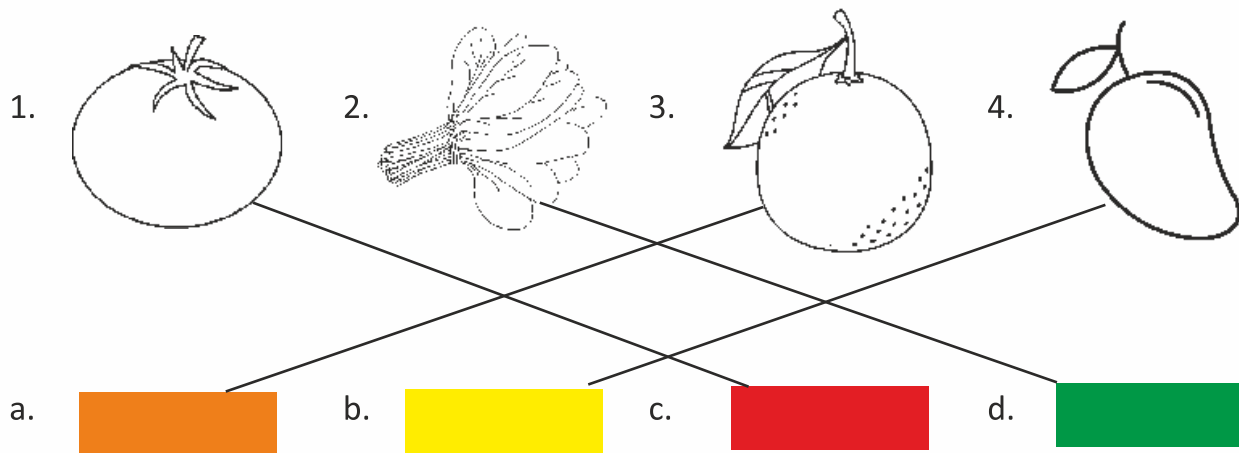
Eggs, fish and pulses

5. Write about any two good food habits.

- Take meals on time.
- Avoid eating junk food.

E. Do it yourself

F. Colour them yourself



5

Our Clothes



Self-Assessment

A. Tick the correct option.

- What do we need to cover our body?
a. House b. Clothes c. Food
- Which clothes are suitable for summer?
a. Cotton b. Silk c. Woollen
- Which clothes are suitable for winter?
a. Silk b. Woollen c. Both of these
- Who of the following wear a uniform?
a. Doctors b. Soldiers c. Both of these
- Who weaves the thread into cotton cloth?
a. Weaver b. Spinner c. Neither of these

B. Fill in the blanks with words given in the box.

thread cool warm white sheep

- Cotton clothes keep us cool.
- Woollen clothes keep us warm.
- We get wool from sheep.
- The spinner spins cotton into thread.
- Doctors wear a white coat.

C. Write T for true and F for false statements.

- Clothes make us look smart. T
- Woollen clothes keep us cool. F



3. Silk clothes are shiny.
4. People who do special work wear uniforms.
5. We wear costumes for special purposes.

T
T
T

D. Read, see and understand. In each row, cross the pictures which do not make sense. CTS

1. Cotton clothes :



2. Woollen clothes :



3. Silk clothes :



E. Answer the following questions.

1. Why do we need clothes?

We need clothes to cover our body and to make us look tidy and smart.

2. Why do we wear different types of clothes?

We wear different types of clothes depending on season, the work we do, and the place we live in.

3. Why do we wear silk clothes for parties?

Silk clothes are shiny so we wear them for parties.

F. Count and write each type of socks in the following table. Convert each type of socks in number of pairs.

CC



Total No. of Socks

6

2

4

8

No. of Pairs

3

1

2

4

G. Do it yourself



6

Our House



Self-Assessment

A. Tick (✓) the correct option.

- Which of the following is a kutchra house?
 - Duplex
 - Hut
 - Apartment
- Which of the following is not used to make a kutchra house?
 - Cement
 - Mud
 - Thatch
- Which of the following is not used to make a pucca house?
 - Iron
 - Cement
 - Thatch
- It is found in the places that are covered with snow all the year round.
 - Stilt house
 - Tent
 - Igloo
- This is a wooden house that floats on water.
 - Houseboat
 - Stilt house
 - Caravan

B. Fill in the blanks with words given in the box.

camping drainage ice animal pillars

- A stilt house is a wooden house having wooden pillars.
- An igloo is made up of ice blocks.
- People use tents for camping.
- A caravan is drawn by an animal or a motor vehicle.
- An ideal house has a good drainage system to discharge used water.

C. Write T for true and F for false statements.

- A kutchra house is also a temporary house. T
- A pucca house lasts only for a few years. F
- A plumber fixes pipes and taps of a house. T
- A painter makes windows and doors of a house. F



5. An ideal house is spacious and clean.

T

D. Answer the following questions.

1. Why do we need a house?

We need a house to live and keep our belongings safe.

2. What do you mean by a kutcha house?

Kutcha house is a temporary house made up of mud, thatch and wood.

3. What is a pucca house?

Pucca house is a permanent house made of bricks, cement, iron, stone chips, sand and wood.

4. Name any two special houses?

Igloo and tent house

5. What does a mason do?

A mason sets the bricks and fixes them with cement.

E. The letters in the names of some special houses have got jumbled up. Unscramble them and write the names correctly. LS

1. TNTE :

TENT

2. IOOGL :

IGLOO

3. CAVARAN :

CARAVAN

4. HOUTSEBOA :

HOUSEBOAT

F. There are two windows in every room of a house. If there are 3 rooms in the house, find the total number of windows. CC

6 windows

G. Do it yourself



7

Our School



Self-Assessment

A. Tick (✓) the correct option.

- Children go to school to _____.
 - study
 - walk
 - sleep
- Who ensures that the school is functioning properly?
 - Teacher
 - Principal
 - Guard
- Who teaches children at school?
 - Teacher
 - Cleaner
 - Gardener
- Who mops the floor of the school building?
 - Cleaner
 - Gardener
 - Driver
- Children give cards to their teachers and thank them on this day.
 - Children's Day
 - Teacher's Day
 - Sports Day

B. Fill in the blanks with words given in the box.

students games drivers head bell

- Children learn to play many indoor and outdoor games.
- Principal is the head of the school.
- Office staff maintains the records of students at school.
- A school peon rings the bell when a period gets over.
- The drivers of a school pick and drop students.

C. Write T for true and F for false statements.

- A music teacher teaches children how to play different musical instruments. T
- The Teacher's Day is celebrated on 14 November. F



3. The birthday of Jawaharlal Nehru is celebrated as the Children's Day.
4. The gardener grows plants and maintains the school garden.
5. A good student need not reach school on time.

D. Answer the following questions.

1. Write any two activities that children do at school?

Children study and play at school.

2. Who keeps a watch on visitors at the school gate?

Guard keeps a watch on visitors at the school gate.

3. What do children do on the Annual Day of their school?

Children take part in cultural activities on the Annual Day.

4. What activities are done on a school's Sports Day?

Races, games, swimming competitions, etc. take place on school's Sports Day.

5. Mention any two good habits or things that make you a good student.

- I obey and respect all the school staff.
- I reach school on time.

E. Look at the beginning letters of the following words. Set the words according to alphabetical order. CC

TEACHER

GARDENER

CLEANER

PRINCIPAL

DRIVER

CLEANER

DRIVER

GARDENER

PRINCIPAL

TEACHER

F. Do it yourself

G. The students of class 2 of St. Mary have collected ₹ 20 each to help the poor children of their school. If there are 40 students in the class, how much money have they collected altogether? SEL

Total

₹ 800



8

Our Neighbourhood



Self-Assessment

A. Tick (✓) the correct option.

- Which place do we visit to buy postage stamps?
 - Post office
 - Bank
 - Police station
- Which place has many doctors and nurses?
 - Bank
 - Post office
 - Hospital
- Who keep a watch on strangers in a neighbourhood?
 - Police officers
 - Doctors
 - Postmen
- Where can we register our complaint of theft?
 - Bank
 - Fire station
 - Police station
- Which of the following is not a good thing to follow at a public place?
 - Talking loudly
 - Littering
 - Both of these

B. Fill in the blanks with words given in the box.

postman bank people market hospital

- Market has many big and small shops.
- People go to a hospital when they fall sick.
- A postman collects all the letters from the post box.
- An ATM is a facility associated with a bank.
- The job of a fireman is to put out the fire and rescue the people.

C. Write T for true and F for false statements.

- Some parks have swings for children. T
- A nurse takes care of patients in a hospital. T
- An ambulance carries patients to a park. F
- We drop an envelope or letter into a post box. T
- We should wait for our turn in a queue. T



D. Answer the following questions.

1. What do you mean by neighbourhood?

Neighbourhood consists of houses and other places around our house.

2. Why do people go to a park?

People go to a park for walking, jogging, playing, doing exercises or practising yoga.

3. How is a clinic different from a hospital?

A clinic is smaller than a hospital.

4. Name the place where we keep our money and other valuables.

We keep our money and other valuables in a bank.

5. Write any two good habits that we should follow at a public place.

- We should throw trash into a dustbin.
- We should not talk loudly.

E. Find and mark the names of four neighbourhood places in the grid.

P	K	S	D	X	V	M	R
G	B	A	Q	A	N	A	K
U	D	P	L	P	A	R	K
A	F	P	B	A	N	K	S
V	G	L	S	V	S	E	X
A	L	E	A	R	C	T	L
H	O	S	P	I	T	A	L



F. The following two pictures look identical, but they are different in some ways. Find five differences and circle them in the second one.

CTS



PM

EVS FS-5

9

People in Our Neighbourhood



Self-Assessment

A. Tick (✓) the correct option.

- Who among the following fits and repairs taps and pipes?
 - Electrician
 - Plumber
 - Cobbler
- What does a greengrocer sell?
 - Shoes
 - Flowers
 - Vegetables
- Who maintains cleanliness in patients' rooms?
 - Ward boy
 - Nurse
 - Doctor
- Who teaches students in a school?
 - Teacher
 - Police officer
 - Doctor
- Who among the following works in a police station?
 - Doctor
 - Teacher
 - Police officer

B. Fill in the blanks with words given in the box.

furniture money living nurse shoes

- People in a neighbourhood do different kinds of work to earn money.
- Money is important for a living.
- A cobbler mends our shoes.
- A carpenter makes furniture.
- A nurse takes care of patients in a hospital.

C. Write T for true and F for false statements.

- People help each other by doing different kinds of work.
- People do not need to earn money for a living.
- An electrician fits and repairs electric wires and switches.
- A farmer works very hard in the field.
- A doctor keeps a watch on bad people.

T
F
T
T
F

EVS FS-5



D. Answer the following questions.

1. What does a grocer sell?

A grocer sells foodgrains, sugar, salt, soaps, oil and other daily need items.

2. Name any two food items that farmers grow.

Fruits and vegetables

3. What is the job of a doctor?

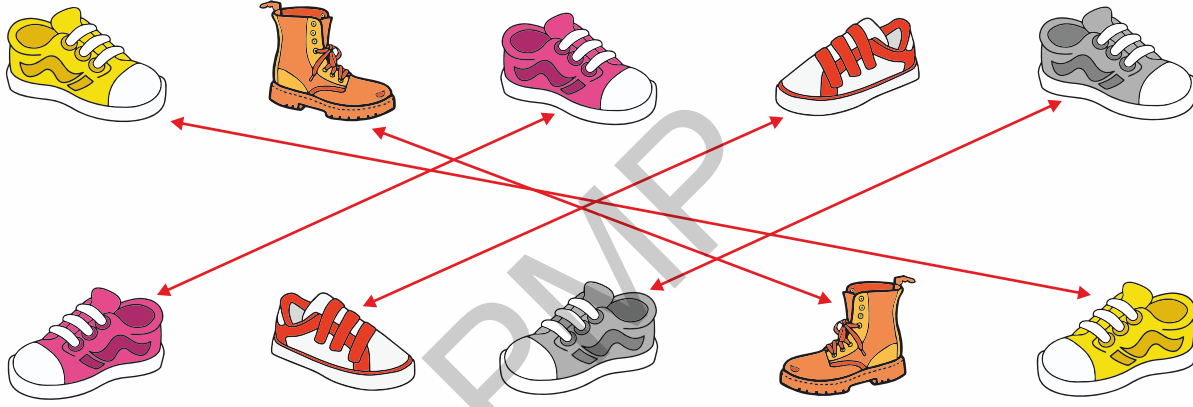
A doctor examines a patient and gives medicines.

4. What does a teacher do?

A teacher teaches students and helps them learn good manners.

E. Connect same shoes to make pairs.

CTS



F. Do it yourself

G. Whose help will you need if you/your

- | | |
|-----------------------------|---------------------|
| 1. have stomach-ache? | <u>Doctor</u> |
| 2. want to buy foodgrains? | <u>Grocer</u> |
| 3. want to buy fruits? | <u>Fruit seller</u> |
| 4. bathroom tap is leaking? | <u>Plumber</u> |





Self-Assessment

A. Tick (✓) the correct option.

- Which of the following has a thick stem?

a. Herb	<input type="checkbox"/>	b. Climber	<input type="checkbox"/>	c. Tree	<input checked="" type="checkbox"/>
---------	--------------------------	------------	--------------------------	---------	-------------------------------------
- Lemon and rose come under this type of plants.

a. Trees	<input type="checkbox"/>	b. Herbs	<input type="checkbox"/>	c. Creepers	<input checked="" type="checkbox"/>
----------	--------------------------	----------	--------------------------	-------------	-------------------------------------
- Which of the following is a climber?

a. Mint	<input type="checkbox"/>	b. Money plant	<input checked="" type="checkbox"/>	c. Muskmelon	<input type="checkbox"/>
---------	--------------------------	----------------	-------------------------------------	--------------	--------------------------
- What does a seed need to develop into a baby plant?

a. Air	<input type="checkbox"/>	b. Water	<input type="checkbox"/>	c. Both of these	<input checked="" type="checkbox"/>
--------	--------------------------	----------	--------------------------	------------------	-------------------------------------
- Which of the following is the root of a plant?

a. Spinach	<input type="checkbox"/>	b. Carrot	<input checked="" type="checkbox"/>	c. Cauliflower	<input type="checkbox"/>
------------	--------------------------	-----------	-------------------------------------	----------------	--------------------------

B. Fill in the blanks with words given in the box.

climber tree seeds shrub herb

- A tree is a tall and big plant with a woody stem.
- A shrub is a small and bushy plant.
- Coriander is an example of herb.
- A climber needs support to grow upright.
- Wheat and rice are seeds.

C. Write T for true and F for false statements.

- Birds make nests on the branches of trees. T
- Bushes have soft green stems. F



3. A herb creeps on the ground.
4. Plants give us oxygen to breathe.
5. Oil is used for cooking food.

F
T
T

D. Answer the following questions.

1. Name any two trees.

Banyan and neem

2. Name any two creepers.

Watermelon and pumpkin

3. Name any two herbs.

Mint and coriander

4. Name any three things that plants give us.

Medicine, oil and food

5. Name some plants whose seeds are crushed to obtain oil.

Peanut, coconut, sunflower and mustard

E. Do it yourself

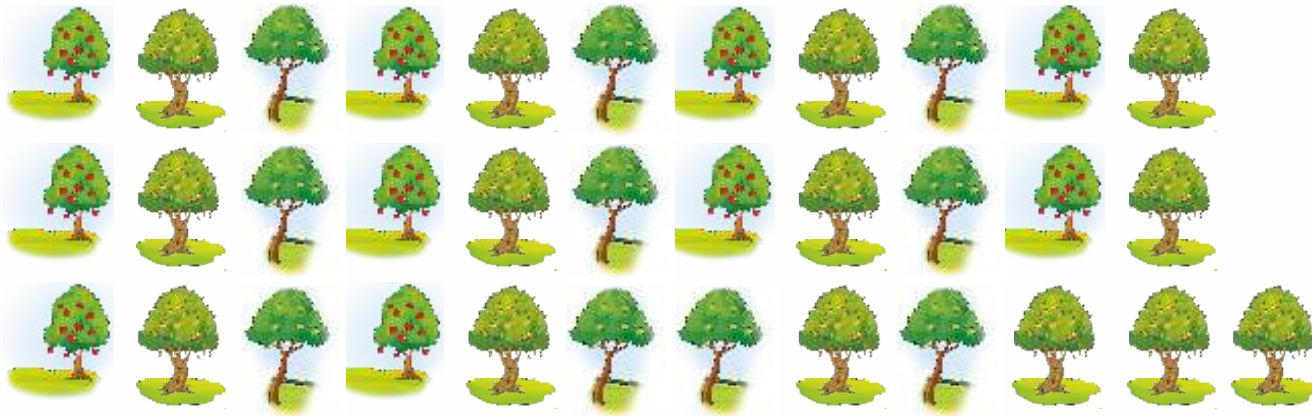
F. Find and mark the different types of plants in the grid.

A	M	L	Q	D	H	T	M
C	R	E	E	P	E	R	O
D	O	S	R	I	R	E	C
N	C	L	I	M	B	E	R
S	H	R	U	B	J	P	B



G. In an orchard, there are 14 mango trees, 12 guava trees and 10 apple trees.
Find the total number of trees in the orchard.

CC



$$\boxed{14} + \boxed{12} + \boxed{10} = \boxed{36}$$

PMP



11

Animals Around Us



Self-Assessment

A. Tick (✓) the correct option.

- What do we call the animals that live in our homes?
 - Pet animals
 - Domestic animals
 - Wild animals
- Which animals live in forests?
 - Domestic animals
 - Wild animals
 - Pets
- Which of the following is a plant-eating animal?
 - Cow
 - Lion
 - Tiger
- Which of the following is a flesh-eating animal?
 - Wolf
 - Goat
 - Horse
- Which animal feeds both on plants and flesh of other animals?
 - Dog
 - Crow
 - Both of these

B. Fill in the blanks with words given in the box.

kennel shed homes pen man-made

- Animals need homes to protect themselves from heat, cold and rain.
- Pets and domestic animals live in man-made homes.
- Cows and buffaloes live in a shed.
- Sheep are kept in a pen.
- A dog is kept in a kennel.

C. Write T for true and F for false statements.

- The rhinoceros is a wild animal.
- Goats and buffaloes are domestic animals.
- Kangaroos and rabbits crawl on the ground.
- Birds fly in the air using their claws.
- Bees make honey from nectar collected from flowers.

T
T
F
F
T

EVS FS-5



D. Answer the following questions.

1. Name three animals that live in forests.

Tiger, wolf and deer

2. Name any three plant-eating animals.

Cow, goat and sheep

3. Name any two animals that live in trees.

Monkey and squirrel

4. Name any two animals that live in water.

Fish and turtle

5. Name any two animals that can walk and run.

Zebra and elephant

E. *Do it yourself*

F. *Do it yourself*

G. *Do it yourself*

PMP





Self-Assessment

A. Tick (✓) the correct option.

- Which of the following is our home planet?
 a. Mars b. Earth c. Venus
- What is the blanket of air that surrounds the earth called?
 a. Atmosphere b. Cloud c. Fog
- Where do crops grow well?
 a. In deserts b. In plains c. Neither of these
- What do we call the low land lying between mountains and hills?
 a. Valley b. Plateau c. Island

B. Fill in the blanks with words given in the box.

rain Earth plains lake desert

- There is more water than land on the Earth.
- It is easy to construct roads and railways in plains.
- Only a few plants like cactus can grow in a desert.
- Water bodies get filled with rain water or water from melted snow.
- A large water body surrounded by land is called a lake.

C. Write T for true and F for false statements.

- A globe is a model of the Earth. T
- The big cities of India are located in the mountains. F
- Mount Everest is a peak of the Himalayas. T



4. A pond is a large water body surrounded by land. F

5. Sea and ocean water is fresh. F

D. Answer the following questions.

1. What is a model of the Earth called?

A globe is a model of the Earth.

2. Name the landforms found on the Earth.

Plains, deserts, hills, mountains, valleys, plateaus, islands and forests.

3. What do you mean by a desert?

Desert is a vast area of land covered with sand and rocks.

4. Why do people visit hill stations in summers?

People visit hill stations in summers because these places are cool in summer time.

5. Why should we care for our home planet?

Earth gives us food, air and water to live. We also get shelter and clothes.

E. Cross out (×) the picture in which people are making the water body dirty.



F. Match the pictures of landforms with their names.



a. Mountain

b. Hills

c. Pond

d. River

G. Do it yourself

PMP





Self-Assessment

A. Tick (✓) the correct option.

- Which of the following can uproot trees?

a. Breeze	<input type="checkbox"/>	b. Wind	<input type="checkbox"/>	c. Storm	<input checked="" type="checkbox"/>
-----------	--------------------------	---------	--------------------------	----------	-------------------------------------
- Through what do humans and land animals breathe air?

a. Lungs	<input checked="" type="checkbox"/>	b. Gills	<input type="checkbox"/>	c. Stomach	<input type="checkbox"/>
----------	-------------------------------------	----------	--------------------------	------------	--------------------------
- We cannot use the water of _____.

a. river	<input type="checkbox"/>	b. pond	<input type="checkbox"/>	c. sea	<input checked="" type="checkbox"/>
----------	--------------------------	---------	--------------------------	--------	-------------------------------------
- Drinking water should be _____.

a. Colourless	<input type="checkbox"/>	b. Odourless	<input type="checkbox"/>	c. Both of these	<input checked="" type="checkbox"/>
---------------	--------------------------	--------------	--------------------------	------------------	-------------------------------------

B. Fill in the blanks with words given in the box.

rain gills germs health leaves

- Fish breathe air through their gills.
- Plants take in air through their leaves.
- Breathing in polluted air is harmful for our health.
- The main source of water on the Earth is rain.
- When we boil water for some time, it kills the germs in it.

C. Write T for true and F for false statements.

- Air is everywhere and we can see it. F
- Moving air is called wind. T
- We cannot use water of seas and oceans. T
- Water should be stored in a clean container. T
- Water is essential for life on the Earth. T



D. Answer the following questions.

1. What are the properties of air?

Air has weight and it occupies space.

2. Write any two uses of air.

- Humans and other organisms need air to breathe.
- Air is needed for burning.

3. Write any two ways in which we can keep the air clean.

- We should plant more and more trees.
- We should not burn garbage or dry leaves in open.

4. Name some sources of water.

Ponds, lakes and rivers.

5. Write some do's and don'ts for saving water.

Do's

- Close the tap after use.
- Get leaking taps and pipes repaired.

Don'ts

- Do not keep tap running while brushing teeth.
- Do not use shower to take bath.

E. Here are some words related to air and water. But the letters in the words have got jumbled up. Unjumble the letters and write the words correctly.

- | | | |
|----------------|---|--------------------|
| 1. BRZEE | : | <u>BREEZE</u> |
| 2. STOMR | : | <u>STORM</u> |
| 3. RIAN | : | <u>RAIN</u> |
| 4. REVRI | : | <u>RIVER</u> |
| 5. GROWNDAUTER | : | <u>GROUNDWATER</u> |



F. Now, cross out (✗) the activities that cause air and water pollution. Tick (✓) those that are good or do not cause pollution.

- Burning of garbage
- Throwing garbage into water bodies
- Saving water
- Protecting plants and animals
- Planting trees
- Spraying of chemicals on crops
- Reusing things to reduce waste

PMP



14

Weather and Seasons



Self-Assessment

A. Tick (✓) the correct option.

- Which is the hottest season of the year?
 - Winter
 - Monsoon
 - Summer
- In this season, leaves turn yellow and fall from plants.
 - Monsoon
 - Autumn
 - Summer
- Which is the coldest season of the year?
 - Winter
 - Spring
 - Monsoon
- Which season is called the queen of seasons?
 - Spring
 - Autumn
 - Winter

B. Fill in the blanks with words given in the box.

winter air monsoon spring summer

- Earth has a layer of air around it.
- The days are hot and sunny in summer season.
- The days are cold in winter season.
- The days are wet in monsoon season.
- The flowers bloom and new leaves grow in the spring season.

C. Write T for true and F for false statements.

- Weather can change any time. T
- It is usually cloudy in the summer season. F
- Autumn comes after winter. F
- The sun does not shine brightly in winter. T
- Room heaters are used in autumn. F



D. Answer the following questions.

1. What do you mean by weather?

The changing condition of the air is called weather.

2. What do you mean by season?

When weather remains the same for a few months, it is called season.

3. What type of clothes do people wear in summer season? Why?

People wear cotton clothes in summer season to keep cool.

4. In which season do people wear raincoats and gumboots?

People wear raincoats and gumboots in monsoon season.

5. What kind of food items do people like to eat and drink in winters?

In winter, people like to eat hot food and drink hot tea, coffee and soup.

E. The letters in the names of seasons have got jumbled up. Unscramble the letters and write the names correctly. SEL

1. WINERT : WINTER

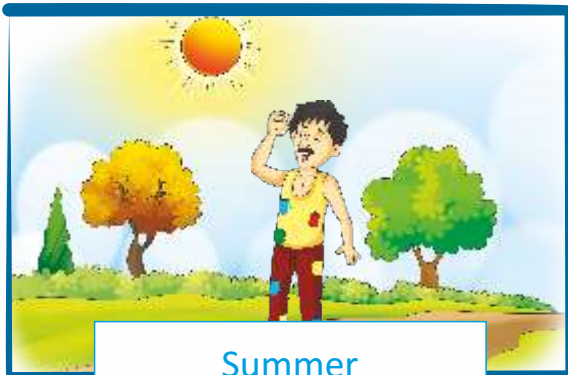
2. SOOMONN : MONSOON

3. ATUUNM : AUTUMN

4. S MEMUR : SUMMER

5. PRIGNS : SPRING

F. Name the seasons depicted in the following two pictures. Now, tick (✓) the things you would like to give to the man in each picture.



- Cotton clothes
- Slippers or sandals
- Raincoat
- Sweater
- Hat
- Umbrella

- Raincoat
- Sweater
- Blanket
- Tea or coffee
- Cold drink
- Shoes

PMP





Self-Assessment

A. Tick (✓) the correct option.

- Which of the following is a means of land transport?

a. Steamer	<input type="checkbox"/>	b. Jeep	<input checked="" type="checkbox"/>	c. Aeroplane	<input type="checkbox"/>
------------	--------------------------	---------	-------------------------------------	--------------	--------------------------
- Which of the following is a means of water transport?

a. Helicopter	<input type="checkbox"/>	b. Train	<input type="checkbox"/>	c. Boat	<input checked="" type="checkbox"/>
---------------	--------------------------	----------	--------------------------	---------	-------------------------------------
- Which fuel does not give harmful smoke on burning?

a. Petrol	<input type="checkbox"/>	b. Diesel	<input type="checkbox"/>	c. CNG	<input checked="" type="checkbox"/>
-----------	--------------------------	-----------	--------------------------	--------	-------------------------------------
- Which of the following is a means of communication?

a. Telephone	<input checked="" type="checkbox"/>	b. Bicycle	<input type="checkbox"/>	c. Both of these	<input type="checkbox"/>
--------------	-------------------------------------	------------	--------------------------	------------------	--------------------------
- Which of the following is the oldest means of communication?

a. Letter	<input checked="" type="checkbox"/>	b. Newspaper	<input type="checkbox"/>	c. Telephone	<input type="checkbox"/>
-----------	-------------------------------------	--------------	--------------------------	--------------	--------------------------

B. Fill in the blanks with words given in the box.

air wheel water communication landline

- People started using carts after the invention of wheel.
- The first means of transport used by man is said to be water transport.
- The fastest means of transport is air transport.
- A telephone is also called landline.
- The exchange of ideas, information, etc. is known as communication.

C. Write T for true and F for false statements.

- Trains and metro trains move on tracks. T

2. Boats and ferries are used to travel to very far-off places.
3. Letters can also be sent through courier.
4. We can watch news on a radio.
5. We need the Internet to send an email.

F
T
F
T

D. Answer the following questions.

1. What do you mean by the means of land transport?

Vehicles that move on land are called the means of land transport.

2. Name the three means of transport.

Land transport, water transport and air transport.

3. Which means of transport will you use to go far off places through a sea?

Ship

4. What is common between radio and television?

Radio and television are used to send information to a large number of people at a time.

5. Which means of communication contains news in print form?

Newspaper contains news in print form.

E. *Do it yourself*

F. *Do it yourself*



16

Directions and Time



Self-Assessment

A. Tick (✓) the correct option.

- How many directions are there?

a. Three	<input type="checkbox"/>	b. Four	<input checked="" type="checkbox"/>	c. Five	<input type="checkbox"/>
----------	--------------------------	---------	-------------------------------------	---------	--------------------------
- In which direction does the sun rise?

a. East	<input checked="" type="checkbox"/>	b. West	<input type="checkbox"/>	c. South	<input type="checkbox"/>
---------	-------------------------------------	---------	--------------------------	----------	--------------------------
- At which part of the day does the sun set?

a. Night	<input type="checkbox"/>	b. Afternoon	<input type="checkbox"/>	c. Evening	<input checked="" type="checkbox"/>
----------	--------------------------	--------------	--------------------------	------------	-------------------------------------
- How many hours are there in a day?

a. 18	<input type="checkbox"/>	b. 24	<input checked="" type="checkbox"/>	c. 26	<input type="checkbox"/>
-------	--------------------------	-------	-------------------------------------	-------	--------------------------
- How many months are there in a year?

a. 8	<input type="checkbox"/>	b. 10	<input type="checkbox"/>	c. 12	<input checked="" type="checkbox"/>
------	--------------------------	-------	--------------------------	-------	-------------------------------------

B. Fill in the blanks with words given in the box.

east south morning seven directions

- We can understand directions by the rising and setting of the sun.
- If we face the rising sun, the east direction is in front of us.
- When we face the rising sun, the direction to the right is south.
- Part of the day when the sun rises is called morning.
- There are seven days in a week.

C. Write T for true and F for false statements.

- Directions help us find places.
- Noon is the time when the sun is overhead.



3. When the sun sets, it is called night.

F

4. The short hand of a clock shows hours.

T

5. February month has 30 days.

F

D. Answer the following questions.

1. Name some words that we use to indicate sides.

We use right, left, up, down, in front of and behind to indicate sides.

2. Name the four directions.

East, West, North and South

3. Which direction will be to your left if you stand facing the rising sun?

North

4. Name the different parts of the day?

Morning, noon, afternoon, evening and night

5. Name the seven days of a week?

Monday, Tuesday, Wednesday, Thursday, Friday, Saturday and Sunday

E. Look at the following map and tell the side of each direction. CoS



Now, write the direction of each of the following.

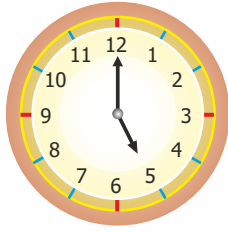
Girl: South Tree: North Dog: West Bench: East



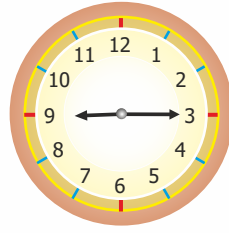
F. Write the time each clock picture is showing. CC



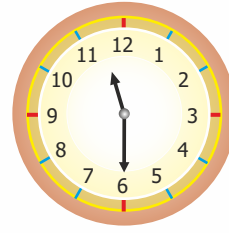
2:00



5:00



9:15

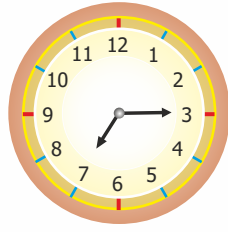


11:30

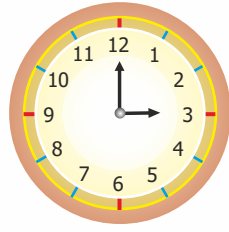
G. Draw the hands of each clock to show the given time.



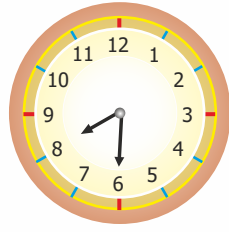
4 : 00



7 : 15



3 : 00



8 : 30



Self-Assessment

A. Tick (✓) the correct option.

- How many types of festivals are there?
 - Two
 - Three
 - Four
- Which festival is known as the festival of lights?
 - Eid
 - Christmas
 - Diwali
- Which festival is celebrated on 25th December?
 - Gurpurab
 - Eid
 - Christmas
- When do we celebrate Gandhi Jayanti?
 - 5th September
 - 2nd October
 - 25th December

B. Fill in the blanks with words given in the box.

August Pongal Gurpurab tree dish

- Christmas tree is associated with Christmas.
- Sevyan is a dish associated with the festival of Eid.
- People share food called langar on Gurpurab.
- People thank Sun God for a good harvest on Pongal.
- Independence Day is celebrated on 15th of August.

C. Write T for true and F for false statements.

- Christmas is celebrated on the birthday of Jesus Christ. T
- Sikhs go to gurudwara to offer prayer on Gurpurab. T
- Bihu is celebrated in Assam four times in a year. F
- Prime Minister hoists the national flag at the Red Fort on the Republic Day. F

D. Answer the following questions.

- What do we do on a festival?

We wear new clothes and eat special food and sweets on a festival.



2. Name the three types of festivals.

Religious festivals, harvest festivals and national festivals.

3. How do Muslims celebrate Eid?

Muslims go to mosque to say their holy prayer 'Namaz'. They wear new clothes and share and enjoy eating seviyan.

4. What are harvest festivals?

Harvest festivals are celebrated to mark the harvest season.

5. When do we celebrate the Independence Day?

We celebrate Independence Day on 15th August every year.

E. Arrange the following words in alphabetical order (as they are arranged in a dictionary). CC

people, harvest, flag, birthday, mosque, church

birthday

church

flag

harvest

mosque

people

F. The letters in the names of some festivals have got jumbled up. Unscramble them and write the names correctly.

GURAPRUB : GURPURAB

BIASHAKI : BAISAKHI

ANOM : ONAM

PANGOL : PONGAL

RIPUBLIC DYA : REPUBLIC DAY

G. Do it yourself



18

Safety Rules



Self-Assessment ■■■

A. Tick (✓) the correct option.

1. How can we avoid accidents?
 - a. By remaining alert
 - b. By following safety rules
 - c. Both of these
2. Which of the following is safe to play with?
 - a. Soft toy
 - b. Scissors
 - c. Knife
3. What should we not do while at school?
 - a. Run on the stairs
 - b. Move in a queue
 - c. Both of these
4. Which of the following is good for our safety on the road?
 - a. Play on the road
 - b. Follow traffic lights
 - c. Run across
5. Which of the following is not contained in a first aid box?
 - a. Cotton
 - b. Pencil
 - c. Bandage

B. Write T for true and F for false statements.

1. Safety is very important. T
2. Our safety is not in our hand. F
3. It is safe to play with wires and switches. F
4. The red traffic light says 'STOP'. T
5. Crowding around an injured person is not good. T

C. Answer the following questions.

1. What should we not do to keep ourselves safe at home? Write any two things.
 - We should not play with sharp things.
 - We should not play with matchsticks, lighter and fire.

2. What will you keep in mind to keep yourself safe in a park?

We should wait for our turn while playing. We should not talk to strangers.



3. Write any two things that you should avoid doing on the road.

- We should avoid running across the road.
- We should not play on the road.

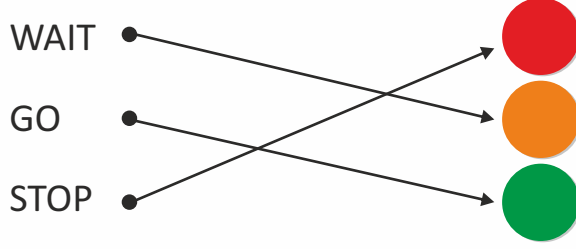
4. What do you mean by first aid?

First aid is the immediate help given to an injured person.

5. What number should we dial to call an ambulance?

We should dial 102 to call an ambulance.

D. Match the lights of the traffic signal with the words.



E. Do it yourself

F. Do it yourself

G. Do it yourself

PMP